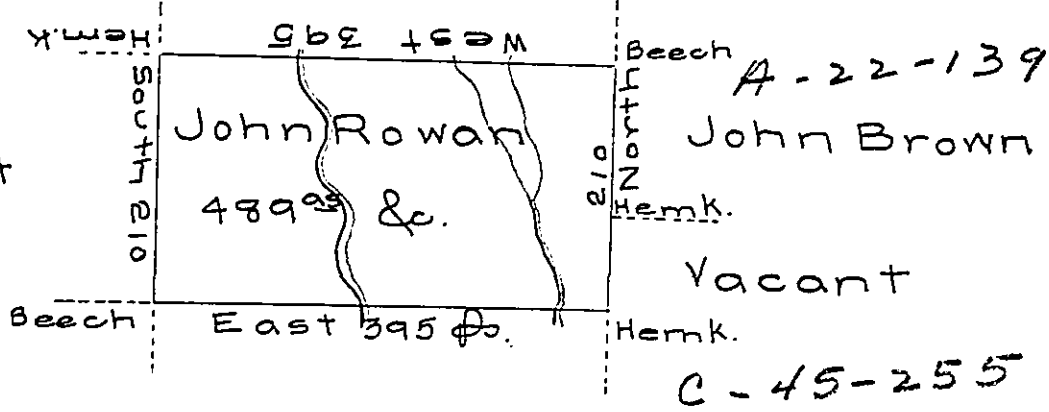


A-8-137

A-14-219

Thos. Forrest
C-49-261

Willm Govitt
C-79-80



C-53-28

Wm Lewis
C-116-85

Draft of a tract of land called — situate on the waters of Wyalusing creek joining land surveyed for Tho^s Forrest & others in the County of Luzerne containing four hundred & eighty nine acres & allowance of six & cent for roads & surveyed for John Rowan the 18th day of Nov^r 1789 in pursuance of a warrant dated the 15th day of April 1788.

by Wm Gray D.S.

Daniel Brodhead Esq^r }
Surv^r Gen!

IN TESTIMONY that the above is a copy of the original remaining on file in the Department of Internal Affairs of Pennsylvania, made conformably to an Act of Assembly approved the 16th day of February, 1833, I have hereunto set my Hand and caused the Seal of said Department to be affixed at Harrisburg, this third day of August 1906.

Isaac D. Brown
Secretary of Internal Affairs.